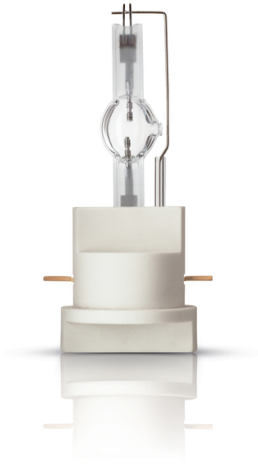


MSR Short Arc

MSR Gold™ 1200 SA/SE 1CT



The lamp's short arc and compact design helps enable a compact luminaire that provides high beam intensity, while the excellent color rendition characteristics help ensure optimal colors on stage. The highly innovative P3 technology, developed by Philips, allows MSR Short Arc lamps to be used at higher temperatures in any burning position. The result? Longer lifetime, fewer early failures and a highly consistent performance throughout the lamp's lifetime.

Product data

• General Characteristics

System Description	SA/SE
Cap-Base	PGJ41
Cap-Base Information	PGJ41
Execution	-
Operating Position	any
Main Application	Entertainment
Life to 50% failures	750 hr
EM	

• Light Technical Characteristics

Color Code	-
Color Rendering Index	80 Ra8
Color Temperature	6000 K
Color Temperature Technical	6000 K
Chromaticity Coordinate X	318 -
Chromaticity Coordinate Y	327 -
Luminous Flux Lamp EM	87000 (min), 93000 (nom) Lm
Luminous Efficacy Lamp EM	78 Lm/W

• Electrical Characteristics

Watts	1200 W
Lamp Wattage Technical	1200 W

Lamp Current	15 A
Ignition Supply Voltage	207 (min) V
Dimmable	Yes

• Luminaire Design Requirements

Pinch Temperature	500 (max) C
Bulb Temperature	950 (max) C

• Product Dimensions

Overall Length C	109 (max) mm
Diameter D	26.1 (max) mm
Light Center Length L	44 (min), 45 (nom), 46 (max) mm
Arc Length O	5.5 mm

• Product Data

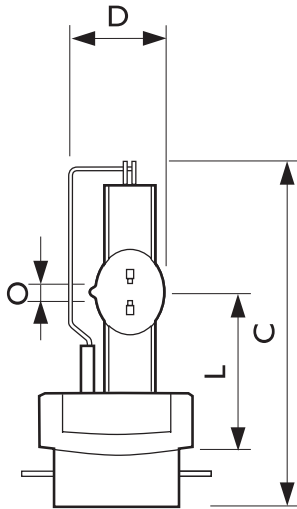
Product number	245761
Full product name	MSR Gold™ 1200 SA/SE 1CT
Short product name	MSR Gold 1200 SA/SE 1CT/3
Pieces per Sku	1
eop_pck_cfg	3
Skus/Case	3
Bar code on pack	8727900926026
Bar code on case	8727900926033
Logistics code(s)	928174605114
eop_net_weight_pp	0.107 kg



PHILIPS

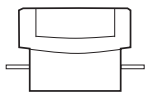
sense and simplicity

Dimensional drawing



MSR Gold SE

Product	A (Min)	A (Norm)	A (Max)	C (Max)	D (Max)	D1 (Norm)	F (Min)	F (Norm)	F (Max)	L (Min)	L (Norm)	L (Max)	O (Norm)
MSR GOLD 1200 SA/SE	-	-	-	109	26.1	-	-	-	-	44	45	46	5.5



PGJ41



© 2012 Koninklijke Philips Electronics N.V.
All rights reserved.

Specifications are subject to change without notice. Trademarks are the property of Koninklijke Philips Electronics N.V. or their respective owners.

www.philips.com/lighting

2012, April 13
data subject to change